

VALVE OPERATION

The operation and the positions of valve settings are as follows

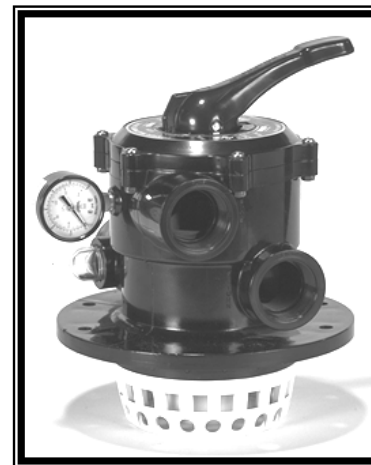
Valve Settings	Direction Of Flow Thru Valve
Filter (also flow during vacuuming)	From pump down through valve, through sand bed, up through stand pipe to valve and back through pool return
Back-Wash	From pump, through valve, down through stand pipe, up through sand bed and through valve to waste.
Rinse	Flow from pump through valve down through sand bed up through stand pipe through valve to waste. Position also used for initial start-up and leveling sand bed after Back-Wash.
Waste	From pump through valve to waste Also position for lowering water level or assist in draining pool
Closed	From pump to valve without further circulation. Prevents any flow to filter and pool.
Re-circulate	From pump through valve to pool. This position by-passes filter and is used for circulation of pool water only.

NOTE: Always "STOP" pump when changing selector valve position.

INSTALLATION OF SELECTOR VALVE

1. Following the media loading, clean any sand particles or debris from upper surface of tank opening.
2. Install six (6) position selector valve after placing "O" Ring in cavity on underside of valve body. Place valve into tank opening while insuring that "O" Ring has remained in position.
3. Place "V" clamp around the circumference of the valve and tank flange using the nut provided. If clamp is not sufficiently closed to engage the bolt, tap the outer faces of clamp lightly with a rubber mallet. Tighten nut until clamp is closed to within 1/16" - 1/8" of clamp ends touching.
4. Double check that incoming pool lines are connected to appropriate valve openings as marked on valve ports (i.e. pump, return (pool) and waste).
5. The threaded openings on valve are 2" female pipe thread, which will accommodate standard plumbing adapters or threaded couplings. Do not **over** tighten these connections since normally hand tight with one (1) turn with wrench will provide leak proof connection when using one wrap of Teflon tape.
6. Remove white plug from sidewall of valve and install threaded pressure gauge using Teflon tape wrap (do not over tighten). Minimum hand tightening is adequate to provide a good seal.

6 WAY SELECTOR VALVE



OWNER'S MANUAL

W. COOPER INC.®

www.cooperpool.com
1-877-903-POOL



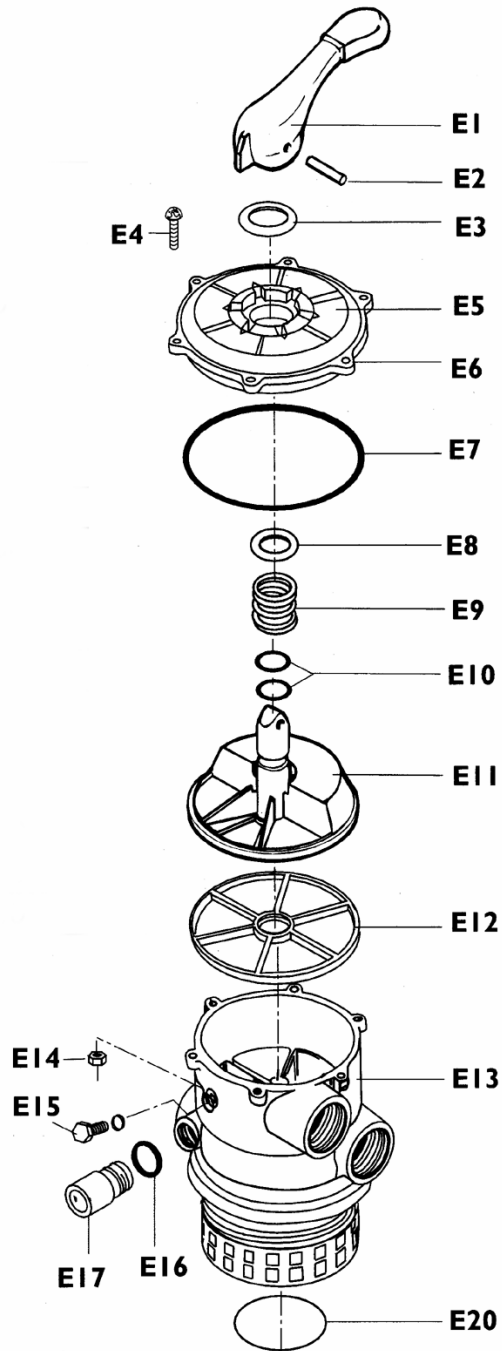
WARNING

PLEASE READ THIS OWNER'S MANUAL AND ALL SAFETY INSTRUCTIONS PRIOR TO ASSEMBLY OR OPERATION

Parts List

1 1/2" Valve (Model 2080)

2" Valve (Model 2280)



No.	Description	1 1/2" Valve	2" Valve
1	Valve Handle	1115	1115
2	Pin	1117	1117
3	Washer	1118	1118
4	Screw	1119	1119
5	Valve Label	2084	2084
6	Cover	1122	1123
7	Cover "O" Ring	1124	1125
8	Washer	1118	1118
9	Spring	1126	1126
10	O Ring	1103	1103
11	Diverter	1104	1105
12	Diverter Gasket	1106	1107
13	Valve Body No. 12 & 13	1108	1109
14	Nut S.S.	1110	1110
15	Pressure Gauge	2062	2062
16	Sight Glass Gasket	1111	1111
17	Sight Glass	1112	1112
18	Valve To Tank O-Ring	2006	2006
20	Tube "O" Ring	1116	1128
21	Key Assy. No. 1 To 11	1129	1131

•••••
Save these
instructions for future
reference
•••••

LIMITED WARRANTY

To original purchasers of its Filter and pump equipment, W. Cooper Inc., warrants its product to be free of defect in material and workmanship for a period of one year from date of purchase. Filter tanks (tank only) carry a 10 year pro-rated warranty from date of purchase. Equipment which fails or is defective during warranty period, except as a result of freezing, accident, negligence, improper installation, or dry run, shall be repaired or replaced at our option without charge within 90 days of defective product. In order to obtain warranty replacements or repair, defective products should be returned, transportation paid, to the place of purchase, or the nearest authorized "Cooper" service center. No return may be made directly to the factory without express written authorization of W. Cooper Inc. Some provinces or states do not allow a limitation on the duration of implied warranty, or the exclusion or limitation of incidental consequential damages, so the above limitation or exclusion may not apply. This warranty gives you specific legal rights, and you may also have other rights which could vary from province to province or state to state.